



NETVIEWER

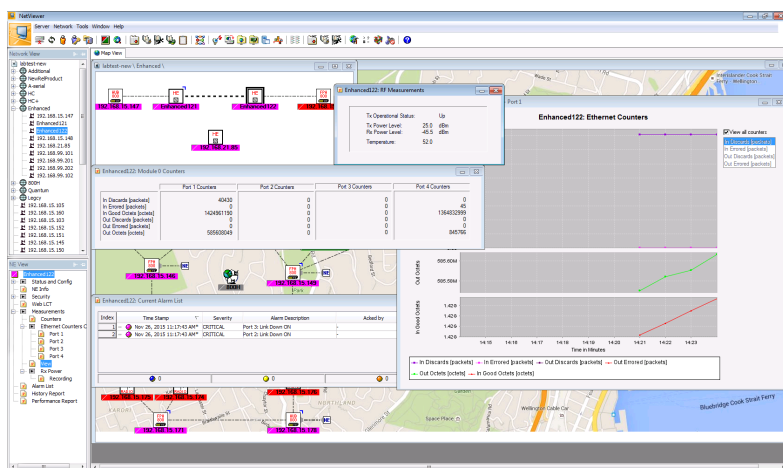
NETWORK MANAGEMENT SYSTEM

INTELLIGENT NETWORK AND ELEMENT MANAGEMENT FOR SIMPLE OPERATION, ADMINISTRATION, MAINTENANCE, PROVISIONING (OAM&P) AND RAPID DEPLOYMENT OF DRAGONWAVE MICROWAVE SOLUTIONS

NetViewer provides a comprehensive carrier-class management solution for Service, Network and Element layers (NMS/EMS). Deployed in the service provider's Network Operation Center, NetViewer offers a broad set of tools that simplify the OAM&P of DragonWave's solutions, in addition to providing extensive fault management, performance monitoring, and inventory and security management capabilities.

The NetViewer suite has been developed according to the layered architecture specified in the Telecommunications Management Network (TMN) framework for monitoring and controlling communications networks. Its advanced architecture is based on an innovative and scalable application server, supported by a user-friendly, Java-based Graphical User Interface (GUI) that furnishes a real-time representation of the network's topology, connectivity, and operational status. Integration into any 3rd party OSS is made simple with standard real-time and batch northbound interfaces.

This highly flexible, scalable, standards based solution enables operators to respond quickly to change requirements, thereby reducing time-to-service, and delivering significant operational cost savings.



SOLUTION HIGHLIGHTS

- Intuitive point-and-click Graphical User Interface
- Comprehensive fault, configuration, administration, performance and security management
- Full set of FCAPS functionality for managed elements including network-wide SW upgrade as well as Backup & Restore
- Connectivity to Network Elements, supervision of connection and working status
- Fault Error Reporting functionality, trap loss recovery, summarization of alarm state
- Performance monitoring, collection, export to dedicated OSS applications, real-time measurement and graphical reporting capability
- Inventory data collection and reporting
- Web access, via HTTP server
- Comprehensive reporting and logging functionality
- Advanced user/sub-domain management either defined locally or synchronized with external directory
- Standard real time and batch northbound interfaces available for integration into any 3rd party OSS system
- Highly scalable architecture
- E2E Ethernet services provisioning and monitoring management
- Emailing of critical alarms (multiple configurable filters supported)
- Management of the entire DragonWave product line in addition to legacy network elements from Siemens, Nokia and NSN

FAULT MANAGEMENT

- Alarms and events collection with graphical representation
- Logging and advanced filtering capabilities
- Alarm handling - Logging of network operator comments and alarm assignment
- Color-based alarm severity visual identification
- Every alarm presents the following information:
 - Colour-coded alarm severity
 - NE name
 - Severity
 - Probable cause
 - Alarm type
 - Specific problem
 - Acknowledged by
 - Acknowledgement date
 - Acknowledgement note
 - Time stamp
 - Emailing to Operators

SERVICE PROVISIONING

- End-to-end connections by means of a single point-and-click operation
- Interactive configuration templates to reduce overall provisioning time and time to service

PERFORMANCE MONITORING

- Performance management compliant to the ITU-T G.821/G.826 ETSI EN 301 129, Y.1731, IEEE 802.1ag and RMON standard specifications
- Per-port statistics and summary information
- Real-time performance monitoring
- Historical performance monitoring data maintained in persistent storage
- User defined performance graphing

SECURITY MANAGEMENT

- Standard access login security (user name and password)
- User classes and groups
- User-definable privileges
- Domain management
- External users management with Active Directory
- Customer identity management with Active Directory
- Operator Actions Log (OAL)
- API toward Centralized Password Managers

SUPPORTED NETWORK DEVICES

SUPPORTED DRAGONWAVE NETWORK ELEMENTS

- Harmony Enhanced^{MC}, Harmony Enhanced, Harmony Eband
- Horizon Compact, Horizon Compact+, Horizon Quantum
- Harmony Radio, Harmony Hub 800, Harmony First Mile 200
- Harmony Trunk, Harmony Lite
- Avenue Link, Avenue Link Lite
- The complete Siemens, Nokia and NSN legacy MW portfolio

NETWORK INTERFACES

NORTHBOUND INTERFACES

- SNMP Agent
- TMF CORBA Agent
- OSS/XML file export
- Flat files export (ex. ASCII, CSV)

SOUTHBOUND INTERFACES

- TNMP Manager
- OSI Manager
- SNMP Manager
- TL1 Manager

E2E ETHERNET MANAGEMENT

- E2E Service provisioning
- QoS Monitoring and SLA verification
- E2E Service monitoring (Y.1731 PM) and test loopback
- Compliance with MEF standards

| NetViewer Server (Minimum Hardware Requirements) | | NetViewer Client (Minimum Hardware Requirements) | | Other Technical Data | |
|---|---|---|---------------------------------|-----------------------------------|---|
| Operating System | Windows 2008, 2008 R2, and 2012 R2 Server (32bit and 64bit) | Operating System | Microsoft Windows 7, 8, 10 | Architecture | Client/Server |
| Processor | 2 x CPU Xeon 2.66GHz (E55xx family) | Processor | Core 2 Duo 1.86 GHz | Server Configuration | Single or Multi |
| Memory (RAM) | 16 to 32 GB RAM (DDR2/3) | Memory (RAM) | 4 GB RAM (DDR2) | Client/Server Type | x86 platform |
| Hard Disk | 300 GB | Hard Disk | 40 GB free disk space (minimum) | Max # of clients in single server | 20 |
| Network Interface | 1 Gbps, 3 NIC's | Network Interface | 1 Gigabit Per Second (Gbps) | Max # of clients in multi server | 160 |
| Miscellaneous | CD/DVD drive | Minimum Screen Resolution | 1280x1024 | Max # of NE in single server | 2500 |
| | | Miscellaneous | CD/DVD Drive | Max # of NE in multi server | 22,500 |
| | | | | Database | MS SQL Server 2008 SE, 2008 R2, and 2012 R2 |